

# SERVICE CATALOGUE 2025



# INDO-GERMAN CHAMBER OF COMMERCE



# About IGCC



Established in **1956**, the Indo-German Chamber of Commerce (IGCC), is part of the worldwide network of 150 German Chambers of Commerce abroad (AHK), located in more than 90 countries.

With close to 4,000 members, AHK Indien, or IGCC, is the **largest** AHK worldwide and the prominent bilateral Chamber of Commerce in India.

**Headquartered** in Mumbai, with six branch offices (Pune, Delhi, Bengaluru, Chennai, Kolkata, and Düsseldorf), IGCC plays a pivotal role for the promotion of the bilateral trade and investment relations between Germany and India. We provide a wide range of support services as well as marketing and networking opportunities for companies of all sectors.





# DEinternational Services



**UTE BROCKMANN**  
Deputy Director General  
Head of DEinternational Services

DEinternational is the global service brand of the German Chambers of Commerce Abroad (AHKs) under which we **offer valuable solutions** for companies to foster their activities on the Indo-German markets, such as market entry consultation, sector analyses and market studies, company formation, recruitment, business partner search, management & dual vocational education

programs, technical training courses, skilled migration support, organization and implementation of business delegations to India and Germany, facilitation for exhibitors and visitors of German and Indian trade fairs, sustainability standards advisory and trainings, events, advertisement and publication formats.







# Business Advisory



## Market Entry Consultation

Our sector knowledge and customised strategic advice helps you enter your targeted market in India or Germany successfully.



Consultation for German companies:

**Dirk Matter**

dirk.matter@indo-german.com  
+49-211-360597



Consultation for Indian companies:

**Chaitra Dole**

chaitra.dole@indo-german.com  
+91-22-66652 159



## Market Research and Analysis

Go beyond the surface with our bespoke market research. We delve into the intricacies of Indian and German market structures, providing actionable insights to fuel your market entry strategy.



**Shweta Suryawanshi**

shweta.suryawanshi@indo-german.com  
+91-20-41047 100





# Business Advisory



## Customs Tariffs and Procedures

Avoid costly delays and disruptions. We support you on how to navigate customs regulations and procedures for prosperous Indo-German trade activities.



**Shweta Suryawanshi**  
 shweta.suryawanshi@indo-german.com  
 +91-20-41047 100



## Search for Business Partners

Unlock your business potential with our expert Business Partner Search. We identify, vet and propose you trusted partners to enlarge your customer base in India and Germany.



**For the Indian market:**  
**Anne Kriekhaus**  
 anne.kriekhaus@indo-german.com  
 +49-211-360597



**For the Indian market:**  
**Anupama Narayan**  
 anupama.narayan@indo-german.com  
 +91-11-47168 808



**For the German market:**  
**Dorrel D'Cruz**  
 dorrel.dacruz@indo-german.com  
 +49-211-360597



**For the German market:**  
**Shweta Suryawanshi**  
 shweta.suryawanshi@indo-german.com  
 +91-20-41047 100



# Business Advisory



## Credit Check Reports

Empower your business decisions by verifying the credit assessments of your potential business partners.



**Anne Kriekhaus**  
anne.kriekhaus@indo-german.com  
+49-211-360597



**Anupama Narayan**  
anupama.narayan@indo-german.com  
+91-11-47168 808



## Verification Service (Geldwäschegesetz)

In compliance with the German Money Laundering Act (GwG), we support bank account openings for businesses in Germany.



**Anupama Narayan**  
anupama.narayan@indo-german.com  
+91-11-47168 808





# Business Advisory



## Company Formation

Streamline your entry into Indian and German markets with our expert guidance on legal entity establishment. We help you understand key considerations and implement the set-up process of your company.



Establishment in India:  
**Kinjal Salvi**  
kinjal.salvi@indo-german.com  
+91-22-66652 123



Establishment in Germany:  
**Chaitra Dole**  
chaitra.dole@indo-german.com  
+91-22-66652 159



## Company Existence Confirmation

We verify your Indian parent company's existence for investment in Germany.



**Anupama Narayan**  
anupama.narayan@indo-german.com  
+91-11-47168 808



**Chaitra Dole**  
chaitra.dole@indo-german.com  
+91-22-66652 159





# Business Advisory



## Permanent Account Number (PAN)

We guide and support you for a swift receipt of your Permanent Account Number.

## Digital Signature Certificate (DSC)

Obtain your DSC for your business transactions in India being guided and supported by us.

## Tax Residency Certificate Filing (Form 10F)

Navigate Indian tax regulations effortlessly with our Form 10F service.



**■ Anne Kriekhaus**

anne.kriekhaus@indo-german.com  
+49-211-360597







# Business Advisory



## Recruitment

Looking for professionals for your company set-up in India? We advise on job descriptions and take on your recruitment requirements identifying, interviewing and proposing you qualified candidates.



**Chaitra Dole**

chaitra.dole@indo-german.com  
+91-22-66652 159



## Translations

Effective communication is key to thriving business relationships. We translate business documents of any type from German to English and vice versa. Further, we organise interpretation services for your business interactions at trade fairs, meetings, & networking events.



**Anupama Narayan**

anupama.narayan@indo-german.com  
+91-11-47168 808





# Business Advisory



## Business Delegations to India

Delegation visits provide first-hand insights into the Indian market and contacts to local partners via seminars, networking events, B2B meetings, round-table meets and site visits, thus facilitating market entry for German companies.



**Ute Brockmann**

ute.brockmann@indo-german.com  
+91-020 41047 121



## Business Delegations to Germany

Indian companies are informed about emerging industry sectors and their market mechanisms as well as cutting-edge technologies. We facilitate business partnerships and help you optimise operations by learning from the German experience.



**Ute Brockmann**

ute.brockmann@indo-german.com  
+91-020 41047 121







# Business Advisory



## German Trade Fairs

We help your business expand internationally through leading German fairs. As official representatives for Berlin, Hamburg, and Spielwarenmesse fairs, we support you at every stage to maximize your trade fair presence and experience.



**Norma Remedios**

norma.remedios@indo-german.com  
+91-22-66652142



## Indian Trade Fairs

We support German companies seeking entry into the Indian market by organising group participations. Comprehensive services provided to exhibiting companies include market information, logistics support, lounge facility, briefing for exhibitors and onsite support staff.



**Reema Shrivastava**

reema.shrivastava@indo-german.com  
+91-11-47168809





# Business Advisory



## Sustainability

We support companies in their various sustainability efforts by offering capacity building, training, and advisory by combining our expertise in supply chain due diligence, business and human rights.



**Indras Ghosh**  
 sustainmarkets@indo-german.com  
 +91-22-66652 149



## Senior Experts Service

We bridge the gap between your company and a unique Expert pool: retired senior German specialists. These seasoned professionals bring a wealth of experience and industry knowledge to your Indian company, offering strategic guidance and innovative solutions to propel your growth.



**Sutanwee Pandit**  
 Sutanwee.pandit@indo-german.com  
 +91-33-2280 2236





# Training and Skilled Migration



## Corporate Training and Management Programs

Fuel business growth with IGTC's German Dual Education. Access industry-ready Post-Graduates in Business Administration, Executive Management, and join customised Management Development Programs tailored to your corporate needs.



**Beena Nair**

beena.nair@indo-german.com  
+91-22-22846830



## Intercultural Training

Enhance relationships, prevent misunderstandings, and seize opportunities with our immersive cross-cultural training. Packed with interactive exercises and real case studies, it equips you for navigating Indian and German cultural nuances successfully.

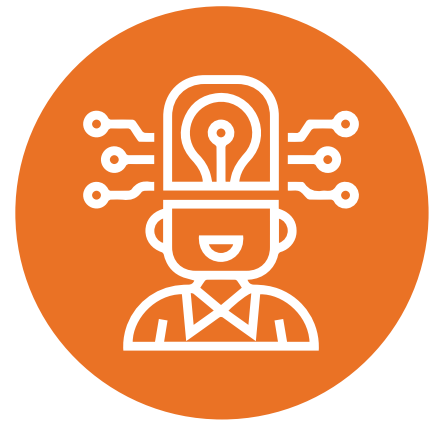


**Catharina Haensel**

catharina.haensel@indo-german.com  
+49-211-360597



# Training and Skilled Migration



## Vocational Education and Training

We empower companies to implement the globally renowned German Dual Vocational Training model. This innovative approach seamlessly blends classroom learning with real-world on-the-job experience, fostering highly skilled and employable employees.



**Md. Manzood Alam**

manzood.alam@indo-german.com  
+91-020 41047 121



## Skilled Migration

Access and hire Indian talent for Germany! We guide German companies in recruiting skilled Indian candidates and offer personalized support to Indian professionals seeking employment in Germany.



**Denise Eichhorn**

denise.eichhorn@indo-german.com  
+91-22-66652 128







# Engagement and Market Outreach Platforms



## Office-in-Office

Focus on growing your business while we provide the perfect launchpad. Our functional office spaces, situated in the heart of business hubs across major Indian cities, offer a complete workspace infrastructure. Book your space, and we'll handle the rest.



### BENGALURU

**SM Madhusoothanan**

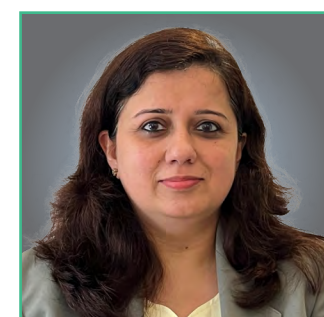
madhusoothanan.sm@indo-german.com  
+91-80-22265 650



### CHENNAI

**Mallikarjuna Shivasharanappa**

mallikarjuna.shivasharanappa@indo-german.com  
+91-44-28340 835/ 836



### DELHI

**Shivani Chaturvedi**

shivani.chaturvedi@indo-german.com  
+91-11-47168 888 / 801



### KOLKATA

**Tom Reiner**

tom.reiner@indo-german.com  
+91-33-22837 962 / 970, +91-33-22802 236



### MUMBAI

**Kalpesh Saraf**

kalpesh.saraf@indo-german.com  
+91-20-41047 100



### PUNE

**Kalpesh Saraf**

kalpesh.saraf@indo-german.com  
+91-20-41047 100





# Engagement and Market Outreach Platforms



## Events

Elevate your brand visibility in our network. Our exclusive events connect you with the who's who of the Indian and German business landscapes. Forge valuable connections, gain market insights, and propel your brand to the forefront for strategic growth.

### What we offer for your business events:

■ Round Tables

■ Seminars

■ Workshops

■ Product launches

■ Conferences

■ Dinner receptions



#### BENGALURU

**SM Madhusoothanan**

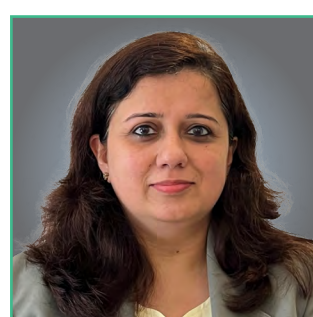
madhusoothanan.sm@indo-german.com  
+91-80-22265 650



#### CHENNAI

**Mallikarjuna Shivasharanappa**

mallikarjuna.shivasharanappa@indo-german.com  
+91-44-28340 835/ 836



#### DELHI

**Shivani Chaturvedi**

shivani.chaturvedi@indo-german.com  
+91-11-47168 888 / 801



#### KOLKATA

**Tom Reiner**

tom.reiner@indo-german.com  
+91-33-22837 962 / 970, +91-33-22802 236



#### MUMBAI

**Sana Bagdadi**

sana.bagdadi@indo-german.com  
+91-22-66652 143



#### PUNE

**Kalpesh Saraf**

kalpesh.saraf@indo-german.com  
+91-20-41047 100







# Engagement and Market Outreach Platforms



## Publications

Go beyond basic awareness – ignite brand recognition in both the Indian and German markets. Leverage the power of our magazine, insightful newsletters, informative website, and dynamic social media platforms to reach the right audience.



**Drishtirupa Das**

comms@indo-german.com  
+91-22-66652 150



## Advertisements

Elevate your brand visibility by featuring your company and products in our informative newsletters, website, and impactful quarterly business magazines including our prestigious Annual Review and solidify your presence in the Indo-German marketplace.



**Jennifer D'Lima**

jennifer.dlima@indo-german.com  
+91-22-66652 156





# Engagement and Market Outreach Platforms



## Membership

Become a valued member of IGCC and unlock a world of exclusive benefits. Network with leading Indo-German businesses, forge strategic partnerships, and exchange best practices with industry experts. Enhance your opportunities across India and Germany by joining a dynamic community that fuels success.

### Membership benefits:

#### ■ Expand your Network

Get connected with relevant, high-level contacts in the Indo-German Business Environment through our Events and Publications!

#### ■ Stay up to date

Receive key insights on current trends and developments in the Indo-German ecosystem.

#### ■ Hire Experts

Increase visibility of your job vacancies. Place your ad on our website!

#### ■ Enjoy Discounts

Privileged discounts from a wide range of IGCC Partner companies are an exclusive right of IGCC Members.



**Members in India:**  
**Sameer Itkyl**

sameer.itkyl@indo-german.com  
+91-22-66652 138



**Members in Germany:**  
**Dorrel D'Cruz**

dorrel.dacruz@indo-german.com  
+49-211-360597





Supported by:



on the basis of a decision  
by the German Bundestag



# Contact us

## INDO-GERMAN CHAMBER OF COMMERCE



Connect with us for service queries by scanning  
the code or clicking the link.

[CLICK HERE](#)



Maker Tower 'E', 1st Floor,  
Cuffe Parade, Mumbai – 400005.



Tel.: +91-22-66652 121

## BRANCHES

### BENGALURU

**Regional Director: SM Madhusoothanan**

403, Shah Sultan, 4th Floor, Cunningham Road,  
Bengaluru – 560052.

Tel.: +91-80-22265 650

### DELHI

**Regional Director: Shivani Chaturvedi**

21 Jor Bagh, New Delhi – 110 003.

Tel.: +91-11-47168 801

Fax: +91-11-26873 221

### PUNE

**Regional Director: Kalpesh Saraf**

710, Nucleus Mall, 1, Church Road,  
Opp. Police Commissioner's Office, Pune – 411001.

Tel.: +91-20-41047 100

### CHENNAI

**Regional Director: Mallikarjuna Shivasharanappa**

German Centre, No.32 (Old No.117),  
G. N. Chetty Road, T. Nagar, Chennai – 600017.

Tel.: +91-44-28340 835/ 836

### KOLKATA

**Regional Director: Tom Reiner**

3A, Gurusaday Road,  
Kolkata – 700019.

Tel.: +91-33-22837 962 / 970, +91-33-22802 236

### LIAISON OFFICE DÜSSELDORF

**Regional Director: Dirk Matter**

Citadellstraße 12, 40213,  
Düsseldorf

Tel.: +49-211-360 597





## Premium Partners 2025

Premium Prime Partner

Rödl & Partner

 PartnerForIndoGermanTrade

Premium Plus Partner



Member of the  
CHG-MERIDIAN Group



Premium Partner

Deutsche Bank 



 DZ BANK

GROZ-BECKERT



# 2025